

Research

Open Access

Identification of factor XI deficiency in Holstein cattle in Turkey

Hasan Meydan*¹, Mehmet A Yildiz¹, Fulya Özdil², Yasemin Gedik¹ and Ceyhan Özbeyaz³

Address: ¹Ankara University, Faculty of Agriculture, Animal Sciences, 06110 Ankara, Turkey, ²Selçuk University, Faculty of Agriculture, Animal Sciences, 42075, Konya, Turkey and ³Ankara University, Faculty of Veterinary Medicine, 06110, Ankara, Turkey

Email: Hasan Meydan* - hasan_meydan@hotmail.com; Mehmet A Yildiz - mayildiz@agri.ankara.edu.tr; Fulya Özdil - fulyaozdil@selcuk.edu.tr; Yasemin Gedik - ygedik@agri.ankara.edu.tr; Ceyhan Özbeyaz - ozbeyaz@veterinary.ankara.edu.tr

* Corresponding author

Published: 22 January 2009

Received: 31 October 2008

Acta Veterinaria Scandinavica 2009, 51:5 doi:10.1186/1751-0147-51-5

Accepted: 22 January 2009

This article is available from: <http://www.actavetscand.com/content/51/1/5>

© 2009 Meydan et al; licensee BioMed Central Ltd.

This is an Open Access article distributed under the terms of the Creative Commons Attribution License (<http://creativecommons.org/licenses/by/2.0>), which permits unrestricted use, distribution, and reproduction in any medium, provided the original work is properly cited.

Abstract

Background: Factor XI (*FXI*) is a plasma protein that participates in the formation of blood clots. Factor XI deficiency is autosomal recessive hereditary disorder that may be associated with excess bleeding in Holstein cattle.

Methods: In this study, 225 Holstein cows reared in Turkey were screened in order to identify *FXI* genotypes. DNA extractions were obtained from the fresh blood of the cows. Amplicons of *FXI* exon 12 were obtained by Polymerase Chain Reaction (PCR), and analyzed by 2% agarose gel electrophoresis stained with ethidium bromide. Additionally, all cows were confirmed by DNA sequencing to determine whether or not there was a mutant allele.

Results: Carriers of the *FXI* deficiency have two DNA fragments of 320 bp and 244 bp in size. The results of our study demonstrated that only four out of the 225 Holstein cows tested in Turkey carried the *FXI* deficiency. The frequency of the mutant *FXI* allele and the prevalence of heterozygous cows were found as 0.9% and 1.8%, respectively.

Conclusion: The DNA-based test determines all genotypes, regardless of phenotype or *FXI* activity. The mutation responsible for the *FXI* deficiency had not been detected in Holstein cattle in Turkey before prior to this study. The frequency of the mutant *FXI* allele needs to be confirmed by carrying out further analyses on cattle in Turkey and the selection programs should be developed to eliminate this genetic disorder.

Background

Factor XI is one of more than a dozen proteins involved in blood clotting. *FXI* deficiency has been identified in several species of mammals, including humans, dogs and cattle [1-4]. In cattle, *FXI* deficiency has been described in Holstein cattle in Ohio [5] and later in Canadian cattle [6], while some cases of hemorrhagic problems in British cattle have been reported [7]. *FXI* deficiency may result in prolonged bleeding and anemia. Continued bleeding

from the umbilical cord is sometimes seen in affected calves. Prolonged oozing of blood following dehorning or castration may also be observed.

Affected cows frequently have pink-colored colostrum. Blood in the milk led to the identification of the condition in a British dairy herd [8]. Additionally, *FXI* deficiency causes to reduced reproductive performance and affected animals appear to be more susceptible to diseases such as

pneumonia, mastitis and metritis. Therefore, the presence of this genetic defect may have a significant economic impact on the dairy industry [3,8-10]. Affected animals can survive for years with no overt clinical signs, even though they appear to have a higher mortality and morbidity rate.

Pedigree analysis indicates that *FXI* deficiency is an autosomal recessive disorder like *BLAD* (Bovine Leukocyte Adhesion Deficiency), *DUMPS* (Deficiency of Uridine Monophosphate Synthase), and *CVM* (Complex Vertebral Malformation). Accordingly, carriers (heterozygous) of the defective gene are outwardly normal, while affected animals (homozygous) have a mild hemophilia-like disorder; 25 percent of the offspring of a carrier bull and a carrier cow will be affected with a *FXI* deficiency [8]. Carrier cattle exhibit varying symptoms and degrees of reduced *FXI* activity. Current testing methods measure the activated partial thromboplastin time (APTT) to monitor *FXI* activity [6]. Although affected animals with *FXI* deficiency are relatively easy to classify, carriers of the disorder are often difficult to distinguish from normal individuals because of the overlap of activity ranges. To effectively control the spread of recessive defects such as *BLAD*, *DUMPS*, *CVM*, and *FXI* deficiency it is important to accurately identify animals that may appear clinically normal, but carry the mutant allele.

Marron et al. (2004) have identified the causative mutation for *FXI* deficiency. The authors found that the mutation consists of a 76 bp segment (AT(A)₂₈TAAAG(A)₂₆GGAAATAATAATTCA) insertion into exon 12 of *FXI* on chromosome 27. The insertion consists of long strings of adenine (A) bases and contains a stop codon that prevents the full-length protein from being made [9,11].

The purpose of this study was to identify and calculate the frequency of the mutant *FXI* allele in Holstein cattle reared in Turkey.

Methods

Samples and DNA extraction

Two hundred twenty-five Holstein cows were sampled. The blood samples were collected from three different state farms managed by the TIGEM (General Directorate of Agricultural Enterprises) in Turkey.

Blood samples were collected from the jugular vein into EDTA-containing tubes and transported to the laboratory. They were stored at -20°C until the genomic DNA extraction which was carried out by using salting-out method [12]. The genomic DNA was stored at 4°C until use.

PCR assay

The amplification reactions were prepared in a final volume of 20 µl containing as follows; 1 × PCR buffer, 0.2 mM dNTPs, 0.5 units *Taq* DNA polymerase, 1.5 mM MgCl₂, 20 nmol of forward (5' CCC ACT GGC TAG GAA TCG TT 3') and reverse (5' CAA GGC AAT GTC ATA TCC AC 3') primers (GenBank accession number, [AY570504](#)) as suggested by Marron et al. (2004) and 100 ng of genomic DNA. Amplification was performed using an initial denaturation of 10 minutes at 95°C, followed by 34 cycles of 30 seconds at 95°C, 60 seconds at 55°C and 30 seconds at 72°C and a final extension of 10 minutes at 72°C. PCR products resolved by electrophoresis on 2% agarose gels following by staining with ethidium bromide in TBE buffer for 40 minutes.

DNA sequencing

After the gel electrophoresis process, the amplicons of 320 bp and 244 bp were purified using a Qiamp Mini Kit (QIAGEN, Valencia, CA, U.S.A.). The purified samples were sequenced by a Big dye terminator chemistry on an ABI 3100-Avant DNA sequencer (Applied Biosystems, Foster City, CA, U.S.A.). The DNA sequences were analyzed using the Sequencing Analysis Software Version 3.3 (Applied Biosystems, Foster City, CA, U.S.A.).

The gene frequency of the *FXI* locus was estimated by counting the number of genes [13].

Results and Discussion

After the PCR, the normal *FXI* allele in unaffected animals (homozygous wild type) produces a single 244 bp fragment. In homozygous affected animals, the fragment has a length of 320 bp and the heterozygous (or carrier) cattle exhibit two fragments of 244 bp and 320 bp (Fig. 1.).

Analysis of 225 Holstein cows reared in Turkey revealed that four cows were *FXI* deficiency carriers. All other cows possessed normal genotypes. The frequency of the mutant *FXI* allele and the prevalence of the carriers were calculated as 0.9% and 1.8%, respectively.

We also carried out partial sequencing in all cows in order to confirm whether these cattle were carriers or not. Our sequencing results of the mutant *FXI* allele were consistent with prior report [3] of the *FXI* gene deficiency. These results for the mutant allele revealed a mutation consisted of a 76 bp insertion containing poly Adenine sequences with a stop codon (TAA) (Fig. 2.).

It was previously hypothesized that *FXI* deficiency was due to the absence of the *FXI* protein [2]. Upon examination of the mutation in bovine *FXI*, it is most likely that the protein is not absent, but merely truncated prema-

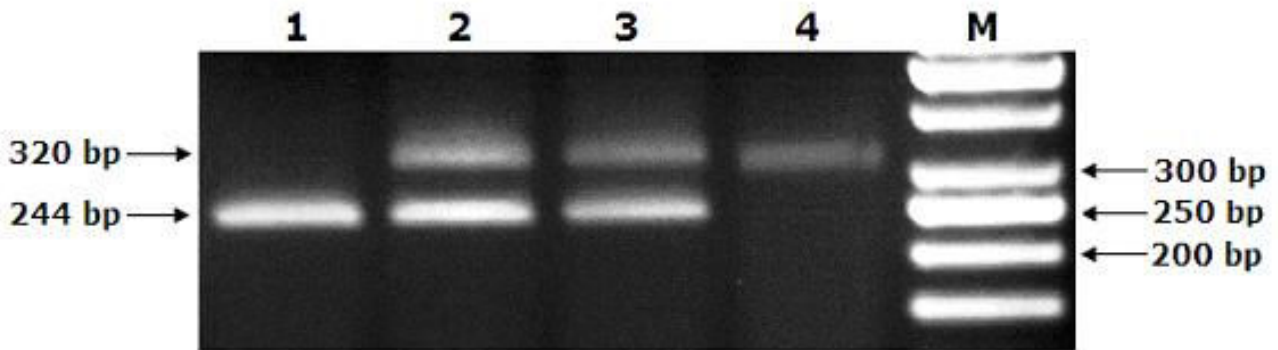


Figure 1
Demonstration of all *FXI* genotypes on 2% TBE agarose gel. Lane 1 is homozygous-unaffected producing a single 244 bp fragment, lane 2 is heterozygous (carrier) exhibiting two fragments of 244 bp and 320 bp, lane 3 is carrier control, and lane 4 is homozygous-affected control producing a single 320 bp fragment. Lane M is DNA Ladder (50 bp, Fermentase®). Control samples were supplied by Dr. Jonathan E. Beever.

turely because of the presence of a stop codon that was introduced by the insertion. Because of the truncation, the mature protein would be lacking the entire serine protease domain encoded by exons 13–15 [3].

FXI deficiency in cattle has been reported in many different countries, such as the USA [5], Canada [6], Britain [7],

Japan [9], and the Czech Republic [4]. However, no case of *FXI* deficiency was previously reported in Holstein cattle reared in Turkey. As a first attempt, this study found that the mutant *FXI* allele frequency in Holstein cows in Turkey is 0.9% and the prevalence of carrier cattle is 1.8%. The prevalence ratio found in this study is similar to those reports in Canadian Holstein cattle (1.2%) [3], Japanese

```

Normal  GCACTGTATCTCAAAGGTTGGGAATTACTTGCTAACGGAATTCTCTTT
Mutant  GCACTGTATCTCAAAGGTTGGGAATTACTTGCTAACGGAATTCTCTTT

TCCTCTCTTGCTTACTCCTTAGGGTCGAGTCACCTAATGTGTTGCGTGT
TCCTCTCTTGCTTACTCCTTAGGGTCGAGTCACCTAATGTGTTGCGTGT

CTATAGCGGCATTTTGAATCAATCAGAAATAAAAAGAGGATAACATCTTTC
CTATAGCGGCATTTTGAATCAATCAGAAATAAAAAGAGGATAACATCTTTC

TTTGGGGTTCAAGAAATAATAATTCA-----
TTTGGGGTTCAAGAAATAATAATTCAA[TAA]AAAAAAAAAAAAAAAAAAAAA

-----
AAAAAAAAATAAGAAAAAAAAAAAAAAAAAAAAAAAAAAAAAGGAAATAATA

-----TGATCAATATGAAAAGGCAGAAA
ATTCATGATCAATATGAAAAGGCAGAAA
    
```

Figure 2
Alignment of bovine *FXI* sequences from normal (top) and mutant (bottom) *FXI* allele. The mutation consists of a 76 bp segment insertion into exon 12 of *FXI*. The insertion consists of long strings of adenine (A) bases and contains a stop codon. The box indicates the premature stop codon generated as a result of the insertion.

Holstein cattle (2.5%) [9], Indian Holstein cattle (0.2%) [14] and Czech Holstein and Simmental cattle (0.3%) [4].

The mutation that causes *FXI* deficiency introduces a premature stop codon. The *FXI* gene mutation in Holstein cattle reared in Turkey was confirmed by this study. Our results indicate that normal cattle have only one DNA fragment of 244 bp while heterozygous cattle exhibit two DNA fragments of 320 bp and 244 bp for the *FXI* gene deficiency.

FXI deficiency has been shown to adversely affect the reproductive performance of cattle; the follicular diameter of the affected cattle is small and is accompanied by lower peak estradiol concentrations in plasma near the time of ovulation. The oestrous cycle of the affected cows is characterized by reduced follicular development and a slow process of luteolysis. Reproductive performance in cattle can be affected by metritis or mastitis, since neutrophil function appears to differ in cells that were isolated from normal cattle and those that came from *FXI* deficient cattle. Additionally, it has been suggested that both homozygous and heterozygous cattle might exhibit lower calving and survival rates. Therefore, the presence of this genetic defect may have a significant economic impact on the dairy industry [9,15].

Conclusion

The DNA-based test (PCR) described can detect the mutation responsible for *FXI* deficiency in Holstein cattle in Turkey. This is the 1st report on the *FXI* deficiency in Holstein cattle in Turkey. The bulls used for artificial insemination should be screened to determine whether they are *FXI* deficiency carriers or not. This is useful to decrease the frequency of the mutant allele in Turkish Holstein population, and selection program should be prepared to screen animals in order to eliminate the disorder.

Competing interests

The authors declare that they have no competing interests.

Authors' contributions

HM participated in the design of the study, collected the blood samples, carried out the extraction of genomic DNA, PCR and DNA sequencing, performed the statistical analysis and participated in the writing of the manuscript. MAY conceived of the study, participated in its design and coordination, performed the statistical analysis and participated in the writing of the manuscript. FO and YG collected the blood samples, carried out the extraction of genomic DNA, PCR and DNA sequencing, drafted the manuscript. CO participated in designing the study and drafted the manuscript. All authors read and approved the final manuscript.

Acknowledgements

We are indebted to Dr. Jonathan E. Beever of the *Department of Animal Sciences, University of Illinois, Urbana-USA*, for providing the control DNA samples. This study was partially supported by a grant, TOVAG-1070914, from The Scientific and Technological Research Council of Turkey (Project coordinator: Dr. M. A. YILDIZ). We are also grateful to Dr. Hans H. Cheng of the *USDA, Agricultural Research Service, Avian Disease and Oncology Laboratory, Michigan State University*, and anonymous reviewers for their comments on an earlier version of the manuscript.

References

- Gentry PA, Black WD: **Prevalence and inheritance of factor XI (Plasma Thromboplastin Antecedent) deficiency in cattle.** *J Dairy Sci* 1980, **63**:616-620.
- Gentry PA: **The relationship between factor XI coagulant and factor XI antigenic activity in cattle.** *Can J Comp Med* 1984, **48**:58-62.
- Marron BM, Robinson JL, Gentry PA, Beever JE: **Identification of a mutation associated with factor XI deficiency in Holstein cattle.** *Anim Genet* 2004, **35**:454-456.
- Citek J, Rehout V, Hanusova L, Vrabcová P: **Sporadic incidence of factor XI deficiency in Holstein cattle.** *J Sci Food Agric* 2008, **88**:2069-2072.
- Kociba GD, Ratnoff OD, Loeb WF, Wall RL, Heider LE: **Bovine Thromboplastin Antecedent (factor XI) deficiency.** *J Lab Clin Med* 1969, **74**:37-41.
- Gentry PA, Crane S, Lotz F: **Factor XI (Plasma Thromboplastin Antecedent) deficiency in cattle.** *Can Vet J* 1975, **16**:160-163.
- Brush PJ, Anderson PH, Gunning RF: **Identification of factor XI deficiency in Holstein-Friesian cattle in Britain.** *Vet Rec* 1987, **121**:14-17.
- Haton BM, Beever JE, Robinson JL: **Mutation that causes factor XI deficiency in Holstein cattle.** *Illini DairyNet Papers* 2000.
- Ghanem ME, Nishibori M, Nakao T, Nakatani K, Akita M: **Factor XI mutation in a Holstein cow with repeat breeding in Japan.** *J Vet Med Sci* 2005, **67**(7):713-715.
- Mukhopadhyaya PN, Jha M, Muraleedharan P, Gupta RR, Rathod RN, Mehta HH, Khoda VK: **Simulation of normal, carrier and affected controls for large-scale genotyping of cattle for factor XI deficiency.** *Genet Mol Res* 2006, **5**(2):323-332.
- Kunieda M, Tsuji T, Abbasi AR, Khalaj M, Ikeda M, Miyadera K, Ogawa H, Kunieda T: **An insertion mutation of the bovine FII gene is responsible for factor XI deficiency in Japanese Black cattle.** *Mamm Genome* 2005, **16**:383-389.
- Miller SA, Dykes DD, Polesk HF: **A simple salting out procedure for extracting DNA from human nucleated cells.** *Nucl Acids Res* 1988, **16**(3):1215.
- Nei M: **Molecular evolutionary genetics.** Columbia University Press, NY; 1987.
- Rajesh KP, Kalpesh JS, Jenabhai BC, Krishna MS, Krothapalli RS, Sambasiva R: **Factor XI deficiency in Indian *Bos taurus*, *Bos indicus*, *Bos taurus* × *Bos indicus* crossbreds and *Bubalus bubalis*.** *Genet Mol Biology* 2007, **30**(3):580-583.
- Liptrap RM, Gentry PA, Ross ML, Cummings E: **Preliminary findings of altered follicular activity in Holstein cows with coagulation factor XI deficiency.** *Vet Res Commun* 1995, **19**:463-471.